



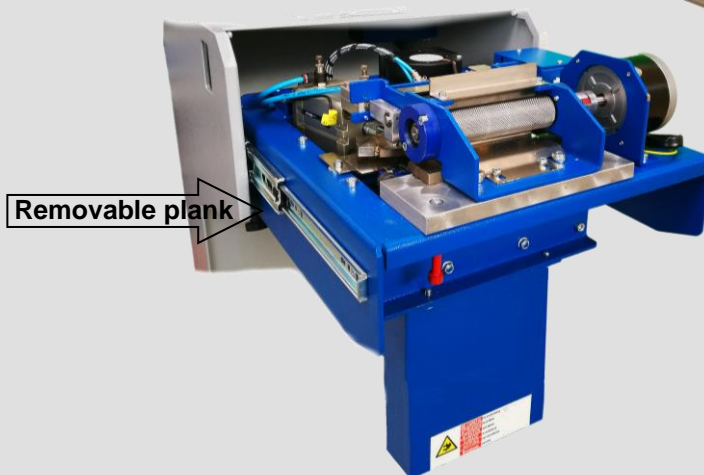
CS 120

CS 120, automatic vertical cutting machine.

Machine for cutting - in set sizes and quantities - materials such as cords, string, tape, zippers, knitted fabric, synthetic materials, rubberised fabric, velcro, elastic and leather.

The machine has two cutting systems, "cold", by means of scissors blades and "hot", using a heated steel blade sealing system.

The hot cutting can be used with fixed or alternating inclination to the horizontal cut. Equipped with PLC for the setting of: length, quantity of pieces, inclination, temperature and time of cutting.



Removable plank

Technical data:

Power supply: 220 V. (110V on request)

Pneumatic supply

Cold cut consumption: 150 W.

Hot cut consumption: 700 W.

Draw speed: 24 m./min.

Maximum material width: 120 mm.

Length of pieces : from 0 to 1000 m.

Electronical "Hot cut" time adjustment: in relation to the thickness of the material to be cut.

Safety devices: alarm buzzer with immediate motor stop in the absence of material and/or in the presence of technical problems; emergency stop button.

Led signal: presence of power supply.

Built-in suction unit: for the exhaust of any "hot cut" fumes.

Removable plank for easy cleaning and maintenance.

Dimensions: Width: 44 cm. Length: 100 cm. Height: 176 cm. (including roll or spool supports).

Weight: about 90 Kg. (including roll or spool supports).

Cutting of material: to the millimetre

Material cutting error is irrelevant: errors caused by the type of material chosen are of no importance.



CS 120

Comes Italia S.a.s, manufacturer of machines for automatic cutting of synthetic and non-synthetic materials, collected in rolls, reels or folded, such as: cords, tapes, zippers, rubberised fabrics, velcro, elastic, leather, rubber tubes, belts, etc., presents the new model, the **CS 120** result of a long experience acquired over the years with the line of machines **Essemme** and that got a very favorable opinion after a year of intensive testing at one of our Customers.

The **CS 120**, with electrical and pneumatic supply is equipped with PLC to setting needed cut (hot or cold), degrees of inclination to the right and left (hot), the quantity and length of the pieces.

The work group is installed on a comfortable removable plank to facilitate cleaning and / or maintenance operations.

The **CS 120** is produced with different configurations, based on the Customer's needs, namely:

- hot cut, cold cut and inclined hot cutting
- hot and cold cutting
- hot and inclined cutting
- straight hot cut
- cold cutting

The **CS 120** can be equipped with various options:

- unwinder to avoid tension tearing of the material
- device for hot or cold drilling (holes - slots) at fixed or programmable distances
- stamping device (reference marks)
- photocell for cutting labels or ribbons with reference marks
- hot or cold die-cutting (notches on plastic or hard materials) at fixed or programmable distances
- pointed or round die-cutting at the beginning and / or end of the tape

Design and implementation of customized solutions based on needs



CS 120-70G for hot cutting of synthetic braided sleeves that need welding without the ends closing.

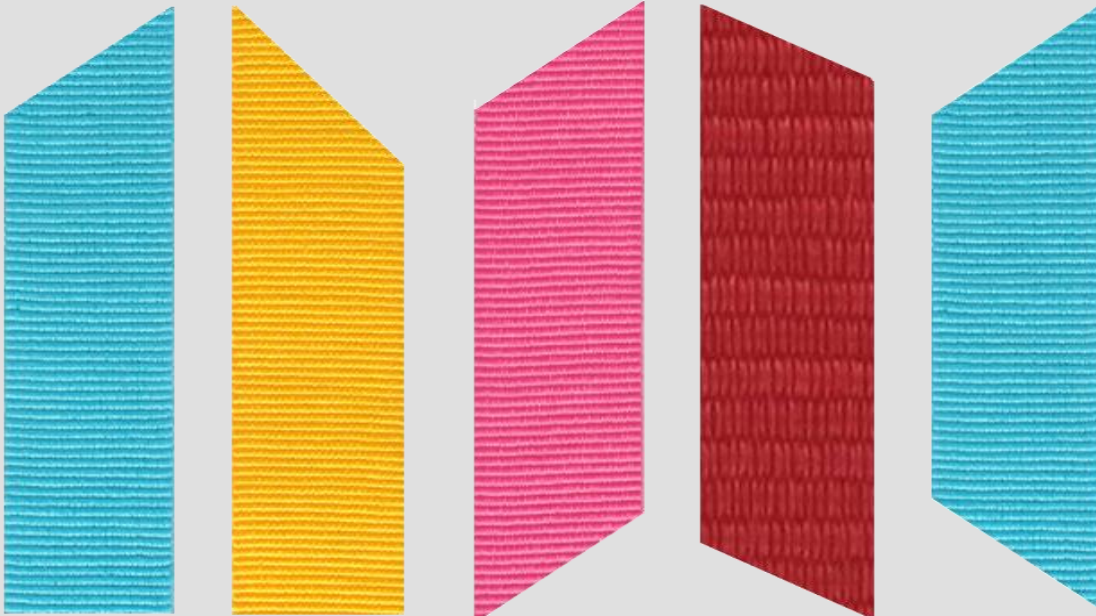


CS 120

Some examples of cuttable materials with CS 120



EXAMPLES OF INCLINATED HOT CUTTING ADJUSTABLE FROM 0° TO 45°

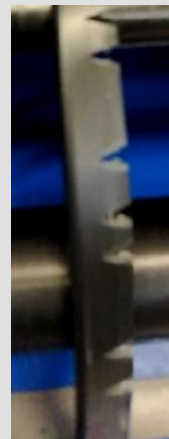


OPTIONAL

HARDENED DIE-CUT for round / straight or round / round hot shaped cutting

HOT PUNCHING (holes or slots)

COLD SHAPED DIE CUTTING

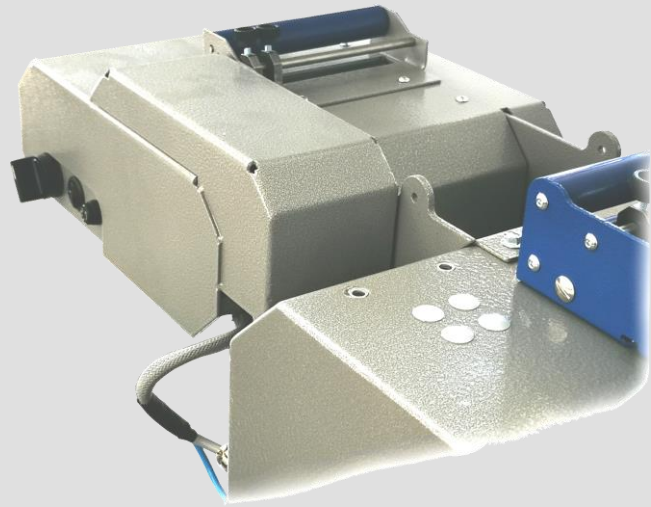




CS 120

UNWINDER

for elastic material or heavy rolls



OTHER OPTIONALS

PHOTOCELL for labels or tapes with reference marks

FEEDER for heavy or large reels in addition to the unwinder

MOTORIZED FEEDER for heavy or large reels

TENSIONER FOR 5 STRINGS

INK STAMPING DEVICE (ribbon sign)

COLLECTOR FOR CUTTED MATERIALS (modules of mt. 1.5)

HARDENED DIE CUT for shaped cut

DEVICE FOR COLD OR HOT DRILLING OR DIE CUTTING

Important. Optional cannot always be installed on the machine at the same time, some are interchangeable, others require the exclusive use and / or the exclusion of the inclined cut.